



Dedalus.uk
HEALTHCARE SYSTEMS GROUP

Dedalus
HEALTHCARE SYSTEMS GROUP

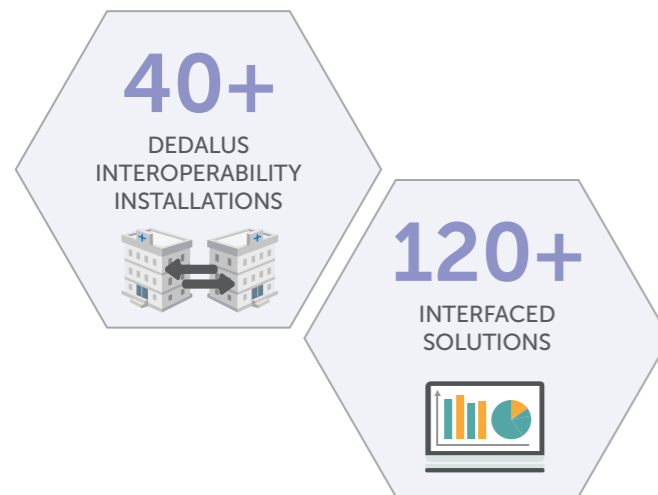
X4H
X-VALUE⁴HEALTH

Interoperability;
The future-proof foundation
for Population Health

www.dedalus-uk.com
www.dedalus.eu

THE CONTEXT

The push for interoperability across the health and care landscape is now one of the NHS's highest priorities with significant funds available to increase patient safety and improve care outcomes, reduce costs and minimise acute admissions. The demand now is for integrated care – be that within the lab network or for cross-department medicines management or shared care across the community. Providing access to complete patient data that enables informed clinical decision-making at all steps in the care journey is now pivotal.



THE SOLUTION

With 1.4 million NHS staff, 1.5 million local government personnel and a huge raft of disparate systems and processes both within healthcare and out in the community – fully integrated care may seem a monumental task. But with over 40 full scale interoperability installations and more than 120 interfaced solutions, at Dedalus we are adept at solving complex challenges across entire care communities.

X4H is a vendor neutral, interoperability platform that consolidates data from many disparate health information systems to give a single, actionable patient record available across all healthcare users. X4H can operate on many levels from a foundation-level integrated record viewer to a platform for full population health management.

Unlike most conventional interoperability platforms which offer only mono-directional data flows (i.e. simple data aggregation), X4H, even in its basic out-of-the-box configuration, enables multi-directional workflows to give true interoperability to clinicians, laboratories, pharmacies, mental health, GPs, community staff, etc. – all within strict security and privacy protocols. It even has the ability to empower patients to take part in their own care process via Patient Portal applications.

CORE FUNCTIONALITY

X4H is Dedalus' foundational interoperability engine, the enabler that brings third party systems together through seamless data integration. Built around the latest global healthcare standards, including IHE, HL7, FHIR and CDA2, it allows healthcare organisations to share and exchange information and future-proof against emerging integration patterns.

The full interoperability platform comprises:

- **Integration engine** – that allows both micro (within a discipline) and macro (cross-specialty) interoperability across all third party systems
- **eMPI** – a central master patient index that consolidates patient IDs and demographics data, from widely disparate systems, to ensure accurate patient matching and care record completeness – eliminating duplications and misidentifications
- **Document & clinical data repository** – that provides a single source for all documents, events, images, tests and historical records
- **Terminology engine** – which ensures that disparate coding methodologies can be accurately matched against each other – including dm+d, SNOMED CT – for precise patient care

- **Policy and consent manager** – that ensures patient consent and GDPR compliance, and gives legitimate users defined access to ensure full process governance across the care community

- **Single sign-on authentication** – gives streamlined access and reduces the need for multiple log-ins

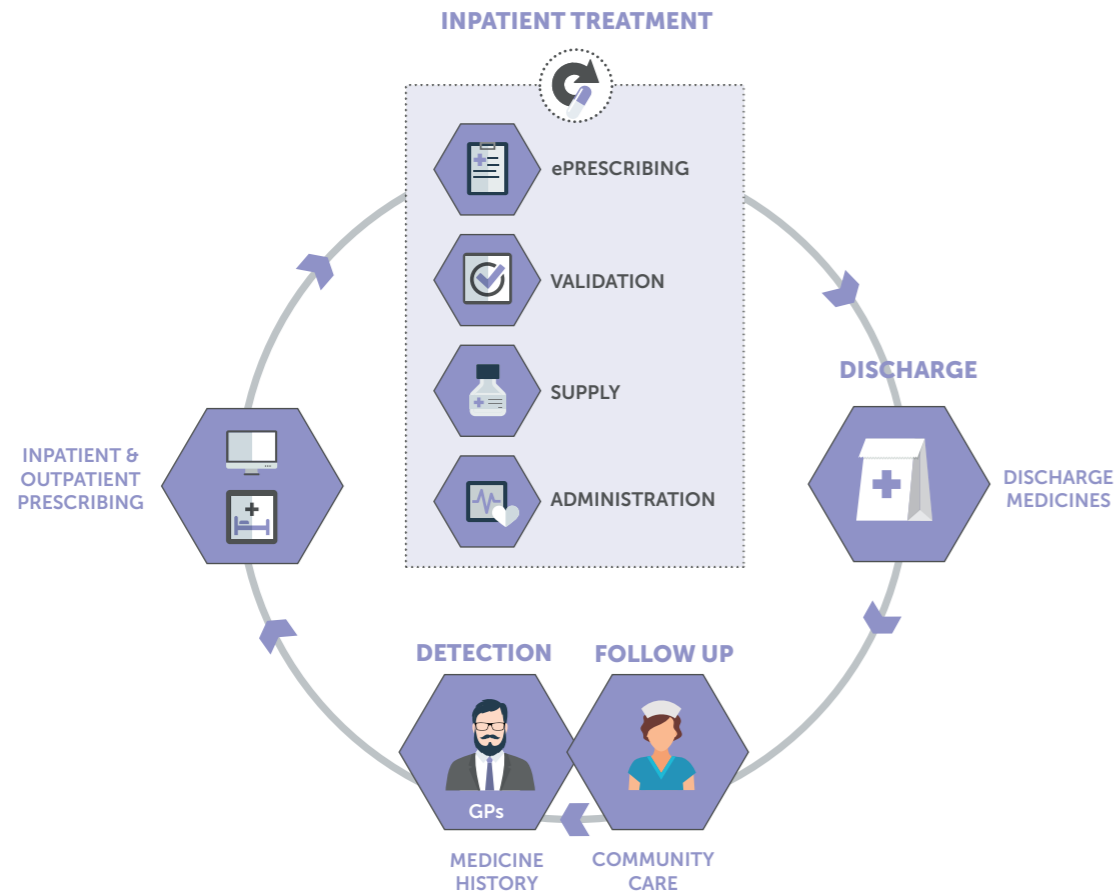
Health Viewer – our entry-level, web-based solution is HTML5 compliant and gives clinicians access to this invaluable data repository from a variety of handheld and static devices.

INTEGRATED CLINICAL PATHWAYS

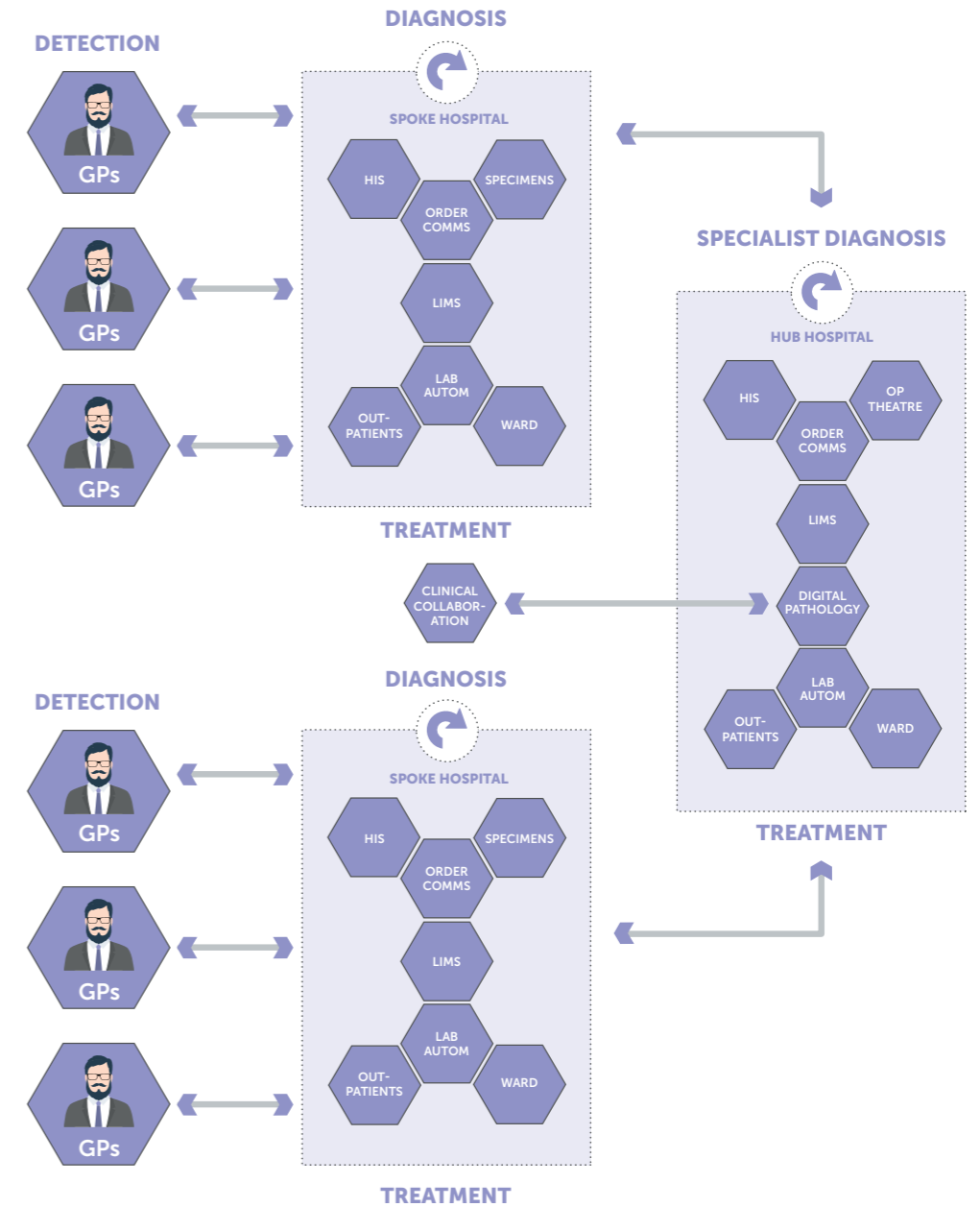
The **Clinical Workflow Enhancement module** enables well-recognised pathways to be pre-set into the system, allowing secure, event-driven alerts to be delivered to the

next carer in the process. Enterprise-wide care planning and new clinical pathway development can also be facilitated by our experienced Change Management team.

E-PRESCRIBING CLINICAL WORKFLOW



PATHOLOGY CLINICAL WORKFLOW

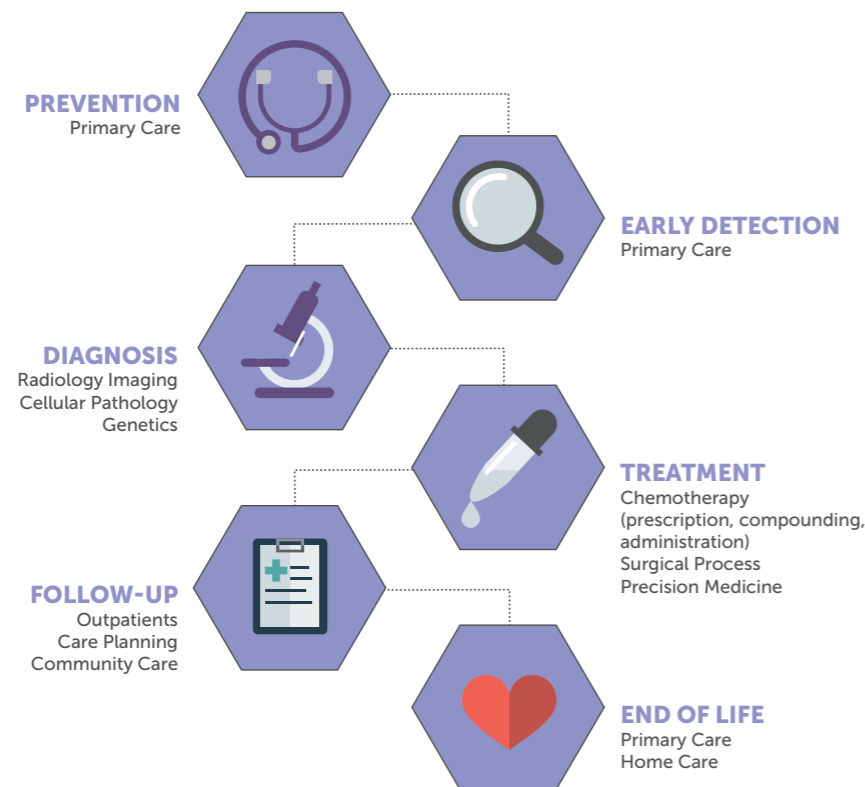


POPULATION HEALTH MANAGEMENT

Our **Business Intelligence and Analytics module** forms one of the core components of our Population Health offering. It allows for a real-time glimpse into any organisation's

performance – both clinical and financial. Users can identify and monitor critical subsets of their population to set clear care parameters and drive health initiatives.

ONCOLOGY CLINICAL WORKFLOW



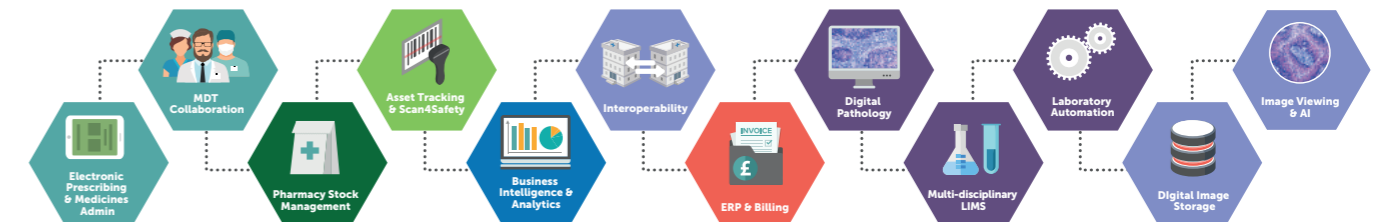
CHANGE MANAGEMENT

The challenges of establishing effective care pathways with strict clinical and information governance across such disparate audiences cannot be underestimated. Human and organisational processes are often well embedded and need

skilled, perceptive, proven management to make the transition to full interoperability. Taking into account all stakeholder needs, while harnessing the full potential of the workforce and any existing systems is what Dedalus does best.

4HEALTH SOLUTIONS

X4H is part of the Dedalus' suite of 4Health Solutions which offer fully integrated care both within the acute setting and out into the community.



Covering the full spectrum of clinical healthcare applications, Dedalus provides **DIAGNOSTIC CARE** solutions including digital cellular pathology, LIMS, laboratory automation and digital image storage & management. Our **CLINICAL CARE** solutions incorporate asset tracking, MDT management, pharmacy stock management, e-prescribing & medicines

administration. Whilst our underpinning **INFRASTRUCTURE** applications encompass powerful interoperability capabilities, business intelligence & analytics and enterprise resource management (ERP) & billing – to provide a fully integrated solution set for all core clinical care processes.

Dedalus Healthcare Ltd
is part of the Dedalus Group,
which is the largest European
provider of healthcare information
systems, with implementations on
4 continents, in 25 countries and a
multi-million Euro R&D budget. A specialist in
interoperability and clinical workflow solutions,
Dedalus is at the forefront of new solutions
development and is #3 KLAS-rated for new clinical
projects worldwide – with over 1,500 client
hospitals and 22,000 GPs.

www.dedalus-uk.com
www.dedalus.eu

DEDALUS HEALTHCARE LTD.

504B The Big Peg, 120 Vyse Street,
Birmingham B18 6NE
tel & fax +44 (0)121 638 0860
uk@dedalus.eu